

MONDAY

AM 9.00- 1.00

- Welcome and personal introductions
- Course objectives
- Studio tour and induction of studio equipment
- Understanding exposures, ISO Apertures and time, how to use a light meter and measuring exposures correctly
- White Balance
- Equipment- Identifying suitable lens
- Creating the right environment for clients

Practical setting up the studio for a shoot

- Using a light meter, props and studio lights and attachments.

PM 1.30- 5.00

Introduction to Photoshop session

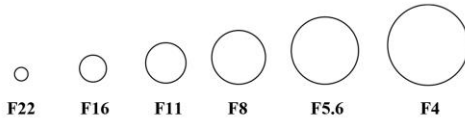
- Cropping and bordering
- Sharpening
- Correcting exposures
- Dodge and Burn tool
- Retouching
- Converting an image to B/W
- How to create and batch process adjustments using Actions with Photoshop

Introduction to Airbrushing/retouching Session

- Editing an image using Portrait Professional



APERTURE

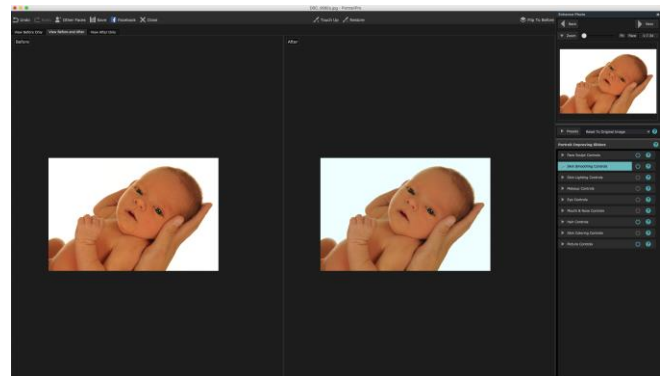


TIME

1/15 1/30 1/60 1/125 1/250 1/500

ISO

100 200 400 800 1600 3200



Before Images



After



Understanding and familiarity with studio equipment, camera settings and Exposures to capture a variety of looks.

Day & Time	Subject	Tutor activity	Learner Activity	Assessment of learning	Resources
Monday 9.00am-10.00am	Introductions, course brief and health and safety procedures	Presentation with questions and answers	Listening, observing, asking questions	Feedback through questioning	Course Handbook PowerPoint Presentation
Monday 10.00am-11.00am	Manual camera settings, correct lens choice	Practical demonstration Q&A	Listening, observing, asking questions To set camera up in manual settings	Practical observation	Course Handbook PowerPoint Presentation DSLR Camera
Monday 11.00am-12.00pm	Studio set up using light meter, studio lights and props	PowerPoint presentation, step by step practical demonstration and Q&A	Set up a studio using correct attachments. To understand lighting ratios.	Practical observation	Course Handbook Studio, studio equipment and props
Monday 12.00pm-12.30pm	Creating the right environment for your clients	PowerPoint presentation and lecture	Listening, observing, asking questions	Feedback through questioning	Course Handbook PowerPoint Presentation

Photoshop, digital manipulation and marketing

Day & Time	Subject	Tutor activity	Learner Activity	Assessment of learning	Resources
Monday 1.00pm-3.00pm	Photoshop Sizing and cropping, using layers, dodging, burning, levels adjustment, cloning tool, sharpening	Step by step demonstration, Q&A	To adjust images using Photoshop	Practical observation, Q&A	Computer and editing software Course Handbook
Monday 3.00pm-4.00pm	Photoshop How to create and action and batch process	Step by step demonstration, Q&A	To create an action and to use it to batch process	Practical observation, Q&A	Computer and editing software Course Handbook
Monday 4.00pm-5.00pm	Portrait Professional	Step by step demonstration, Q&A	Introduction using portrait professional to improve the aesthetics of a portrait	Practical observation, Q&A	Computer and editing software Course Handbook

TUESDAY

AM 9.00-12.30

Theory and Practical Photographic Session (Bump)

Studio Bump Shoot with a model using various lighting techniques to create different looks.

Equipment including:

- Studio heads
- Barn doors
- Snoot
- Honeycombs
- Reflectors

This is a very popular studio sitting and can be very profitable. Some of our students are apprehensive and unsure how to approach this genre of photography, We will teach you various lighting techniques and how to pose your subject to create a varied and contemporary set of images

Portfolio development

- Using Photoshop to create portfolio images from earlier shoots



PM 1.00- 2.30

Theory and Practical Photographic Session (New-born)

Studio New-born Shoot with a SIB using various lighting techniques to create different looks.

Equipment including:

- Studio heads
- Soft box
- Barn doors
- Snoot
- Honeycombs

Again this is a very popular studio sitting and can be very profitable.

Using an SIB will allow all students to gain hands-on experience of how to physically handle and pose a New-born.

Portfolio development

Using Photoshop to create portfolio images from earlier shoots



Bump Shoot

Day & Time	Subject	Tutor activity	Learner Activity	Assessment of learning	Resources
Tuesday 9.00am-9.30am	Setting up the studio	Supervise and assist	Using the skills from lesson 1 to set up the studio for a bump shoot, both high-key and low-key	Practical observation	Course Handbook Lecturers supervision
Tuesday 9.30am-11.30am	Bump shoot	PowerPoint presentation, practical demonstration, supervise and assist	To take images of the bump shoot using a variety of studio set ups. Pose, direct and give instructions to the model		Course Handbook PowerPoint Presentation Studio and studio equipment Model
Tuesday 11.30am-12.30pm	Editing images from bump shoot	Supervise and assist	Using the skills from lesson2 to create finished images	Practical observation	Course Handbook Lecturers supervision

New born shoot

Day & Time	Subject	Tutor activity	Learner Activity	Assessment of learning	Resources
Tuesday 1.00pm-2.00pm	Setting up the studio	Supervise and assist	Using the skills from lesson 1 to set up the studio for a new born shoot, both high-key and low-key	Practical observation	Course Handbook Lecturers supervision
Tuesday 2.00pm-4.00pm	New born shoot	PowerPoint presentation, practical demonstration, supervise and assist	To take images of the new born shoot using a variety of studio set ups. Pose baby mannequin		Course Handbook PowerPoint Presentation Studio and studio equipment SIB (stand in baby mannequin)
Tuesday 4.00pm-5.00pm	Editing images from new born shoot	Supervise and assist	Using the skills from lesson2 to create finished images	Practical observation	Course Handbook Lecturers supervision

WEDNESDAY

AM 9.00- 12.30

Theory and Practical Photographic Session (Parent and Toddler)

- Photo shoots with models, using high key and classical lighting ratios.

Portfolio development

- Using Photoshop to create portfolio images from earlier shoots

PM 1.00-4.00

Theory and Practical Photographic Session (New-born-SIB)

This is a repeat of the Tuesday afternoon session to allow students to gain more familiarity with this style of shoot and to learn more posing.

Again it will involve setting up the studio for different lighting techniques and physically posing the SIB.

Portfolio development

- Using Photoshop to create portfolio images from earlier shoots



Parent and Toddler shoot					
Day & Time	Subject	Tutor activity	Learner Activity	Assessment of learning	Resources
Wednesday 9.00am-9.30am	Setting up the studio	Supervise and assist	Using the skills from lesson 1 to set up the studio for a parent and toddler shoot	Practical observation	Course Handbook Lecturers supervision
Wednesday 9.30am-12.00pm	Parent and toddler shoot	PowerPoint presentation, practical demonstration, supervise and assist	To take images of the parent and toddler shoot using a variety of studio set ups. Pose, direct and give instructions to the model		Course Handbook PowerPoint Presentation Studio and studio equipment Models
Wednesday 12.00-1.00	Editing images from parent and toddler shoot	Supervise and assist	Using the skills from lesson2 to create finished images	Practical observation	Course Handbook Lecturers supervision
New born shoot					
Repeat of Tuesdays pm New born shoot for students to continue to put into practice the skills learnt and to try any new ideas					
Day & Time	Subject	Tutor activity	Learner Activity	Assessment of learning	Resources
Wednesday 1.00pm-1.30pm	Setting up the studio	Supervise and assist	Using the skills from lesson 1 to set up the studio for a new born shoot, both high-key and low-key	Practical observation	Course Handbook Lecturers supervision
Wednesday 1.30pm-3.00pm	New born shoot	PowerPoint presentation, practical demonstration, supervise and assist	To take images of the new born shoot using a variety of studio set ups. Pose baby mannequin		Course Handbook PowerPoint Presentation Studio and studio equipment SIB (stand in baby mannequin)
Wednesday 3.00pm-4.00pm	Editing images from new born shoot	Supervise and assist	Using the skills from lesson2 to create finished images	Practical observation	Course Handbook Lecturers supervision
Wednesday 4.00pm-5.00pm	End of course debrief and submission of coursework	Q&A	Q&A	Q&A	Course Handbook Q&A